

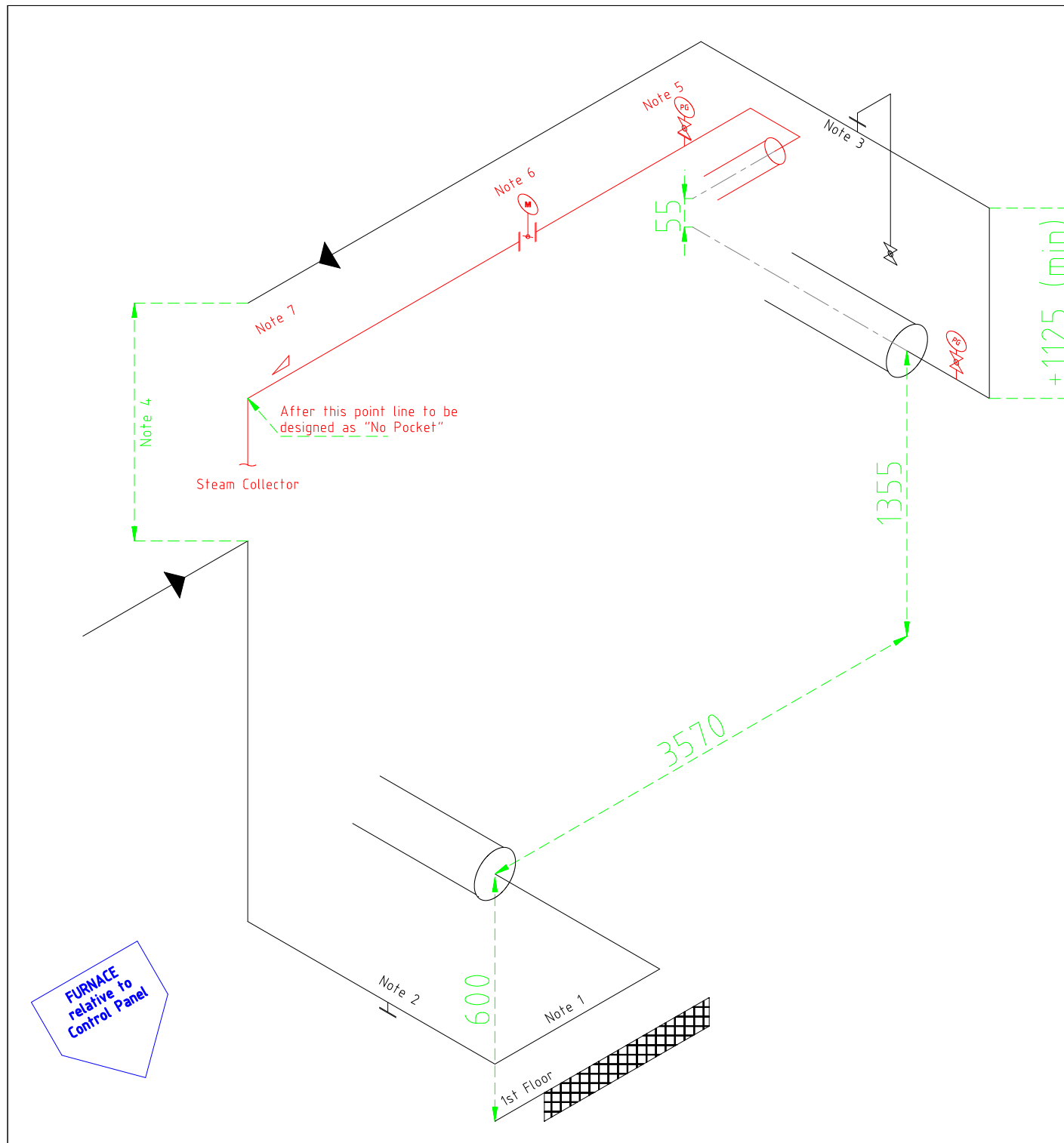
ELECTROLYSER
relative to
Control Panel

Notes:

- 1) Preferably a single u-bend elbow connection instead of x2 90° elbow
- 2) DN25 drain nozzle to be welded sideways or at lowest elevation possible. Preferably flanged with ball valve
- 3) DN25 vent nozzle to be welded at highest elevation possible.
- 4) CW return line shall always be higher or equal to feed line. Ensure for proper air venting
- 5) PG mounted on DN25 flange connection. PG to be pigtailed
- 6) Motorised Butterfly valve to be provided by vendor. Minimum 5xI.D straight run to be provided upstream & downstream
- 7) Sloped towards steam collector. Slope shall be minimum 100mm per 10m (1:100)

General Notes:

- 1) All steam feed lines shall be insulated



DESCRIPTION	REV NO.	MATERIAL	SCALE	DIMENSION
Feed Steam & Cooling Water Piping				
DESIGNED BY:		SHEET 1 OF 1		
MADE BY: UKHAN				
CHECKED BY: XXX		REF.		

